

# Harris County - Jail Population November 2015 Report

## Comparison of Daily Average Jail Population

Category <sup>1</sup>	1st Mtg of Council	1 Year Ago	End of Year	Last Month	Current Month	Aug-09	Nov-14	Dec-14	Oct-15
	Aug-09	Nov-14	Dec-14	Oct-15	Nov-15	Nov-15	Nov-15	Nov-15	Nov-15
<b>Pretrial Detainees (By Highest Charge)</b>						<b>Inmates</b>			
						<b>Percent Change</b>			
District Courts - Other than State Jail Felonies		4,565	4,584	4,885	4,885		7%	7%	0%
District Courts - State Jail Felonies		1,087	1,055	1,233	1,181		9%	12%	-4%
County Courts		452	412	503	482		7%	17%	-4%
Other Harris Co Court detainees (eg: JP, Family, Civil)		54	47	59	55		2%	17%	-7%
<b>Pretrial Detainees</b>	<b>6,151</b>	<b>6,158</b>	<b>6,098</b>	<b>6,680</b>	<b>6,603</b>	<b>7%</b>	<b>7%</b>	<b>8%</b>	<b>-1%</b>
<b>% of total in Custody</b>	<b>54%</b>	<b>71%</b>	<b>72%</b>	<b>75%</b>	<b>76%</b>				
<b>Probationers (no pending charges):</b>									
District Courts		298	287	423	446				
County Courts		26	21	21	19				
<b>Probationers</b>	<b>919</b>	<b>324</b>	<b>308</b>	<b>444</b>	<b>465</b>	<b>-49%</b>	<b>44%</b>	<b>51%</b>	<b>5%</b>
<b>% of total in Custody</b>	<b>8%</b>	<b>4%</b>	<b>4%</b>	<b>5%</b>	<b>5%</b>				
<b>Prisoners Serving County Time: Post-Adjudication</b>									
Sentenced in County Courts		431	363	341	303				
Sentenced in District Courts - State Jail Felons 12.44A	1318 <sup>2</sup>	319	284	137	120				
Sentenced in District Courts - Other		278	249	250	250				
Sentenced in JP Courts		13	11	23	20				
<b>Prisoners Serving County Time: Post-Adjudication</b>	<b>2,919</b>	<b>1,041</b>	<b>907</b>	<b>751</b>	<b>693</b>	<b>-76%</b>	<b>-33%</b>	<b>-24%</b>	<b>-8%</b>
<b>% of total in Custody</b>	<b>26%</b>	<b>12%</b>	<b>11%</b>	<b>8%</b>	<b>8%</b>				
<b>Sentenced to TDC/State Jail: Post-Adjudication</b>									
Sentenced to TDC		501	488	420	401		-20%	-18%	-5%
Sentenced to State Jail		127	117	124	108				
Pending Appeals		147	146	88	90				
<b>Sentenced to TDC/State Jail: Post-Adjudication</b>	<b>632</b>	<b>775</b>	<b>751</b>	<b>632</b>	<b>599</b>	<b>-5%</b>	<b>-23%</b>	<b>-20%</b>	<b>-5%</b>
<b>% of total in Custody</b>	<b>6%</b>	<b>9%</b>	<b>9%</b>	<b>7%</b>	<b>7%</b>				
<b>Others:</b>									
Board of Pardons & Paroles (BOPP)		236	183	305	261		11%	43%	-14%
Witnesses		43	44	39	46				
Non-Harris County Prisoners		47	53	17	14				
<b>Others</b>	<b>674</b>	<b>326</b>	<b>280</b>	<b>361</b>	<b>321</b>	<b>-52%</b>	<b>-2%</b>	<b>15%</b>	<b>-11%</b>
<b>% of total in Custody</b>	<b>6%</b>	<b>4%</b>	<b>3%</b>	<b>4%</b>	<b>4%</b>				
<sup>3</sup> Received, Uncategorized in JIMS		75	95	92	58				
<b>% of total in Custody</b>	<b>0.0%</b>	<b>0.9%</b>	<b>1.1%</b>	<b>1.0%</b>	<b>0.7%</b>				
<b>Total in Harris County Sheriff's Custody</b>	<b>11,295</b>	<b>8,699</b>	<b>8,439</b>	<b>8,960</b>	<b>8,738</b>	<b>-23%</b>	<b>0%</b>	<b>4%</b>	<b>-2%</b>
<sup>3</sup> Average in Inmate Processing Center (IPC)	354	250	258	368	299	-16%	20%	16%	-19%
<b>Total Housed in Harris County Jail</b>	<b>10,941</b>	<b>8,449</b>	<b>8,181</b>	<b>8,592</b>	<b>8,439</b>	<b>-23%</b>	<b>0%</b>	<b>3%</b>	<b>-2%</b>
<b>Total Awaiting Transfer to TDCJ-ID (Paper-Ready)</b>	<b>461</b>	<b>506</b>	<b>486</b>	<b>417</b>	<b>423</b>	<b>-8%</b>	<b>-16%</b>	<b>-13%</b>	<b>1%</b>
<b>% of total in Custody</b>	<b>4%</b>	<b>6%</b>	<b>6%</b>	<b>5%</b>	<b>5%</b>				

<sup>1</sup> The inmate Category Definitions for this report were changed effective January 2011. Data for August 2009 has been reallocated to fit the new categories.

<sup>2</sup> Value taken directly from August 2009 report.

<sup>3</sup> IPC Includes those in intake and receiving.

# Harris County - Jail Population

## November 2015 Report

---

### Observations

For the month of November 2015, the average daily jail population housed declined for the fourth consecutive month to 8,439, a reduction of 152 persons from the previous month but is essentially the same as one year ago. After reaching a peak in July 2015 of 8,950, this decline is consistent with trends observed in previous years.

The average daily jail population housed is down 23% from the first meeting of the Council in September 2009 when the population totaled 10,941 inmates, which was 16% over design capacity and 7% over TCJS approved capacity. Including approved variance beds, the average daily jail population housed for November of 8,439 was 9.4% below the effective housing capacity. Without the use of variance beds, average daily jail population housed was 3.8% below effective housing capacity.

Pretrial detainees represent 76% (6,603 persons) of the total jail population, down 77 persons from the previous month, but is 7% higher (445 persons) than one year ago. The District Court state jail felony detainee population declined for the fourth consecutive month, but is 9% higher (94 persons) than one year ago. The County Court pretrial detainee population declined 21 persons from last month and is 7% higher (30 persons) than one year ago.

The number of probationers with no pending charges increased by 21 persons from last month, and is up 44% from one year ago.

Post-adjudicated County prisoners represent 8% of the total jail population, down 58 persons from last month, and down 33% (348 persons) from one year ago. 599 persons or 7% of the total population are post-adjudicated prisoners sentenced to TDC or state jail, down 23% (176 persons) from one year ago.

The number of parole violators declined 44 persons from last month, but remains up 11% from one year ago.

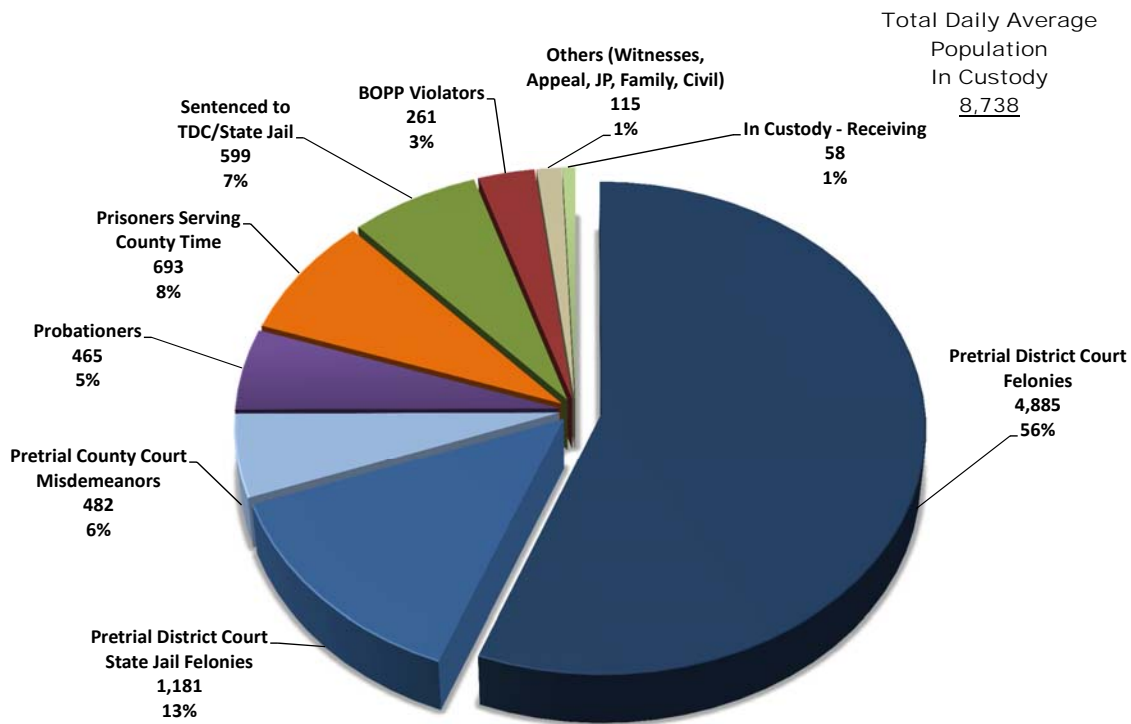
The number of inmates awaiting transfer to TDCJ-ID (i.e. Paper Ready) averaged 423, down 16% from one year ago.

During the month of November, 27% (2,292 persons) of the average daily jail population housed had a mental health history (previously diagnosed or prescribed psychotropic medication). 848 of these 2,292 had either self-identified as being homeless or had received homeless services in the community prior to incarceration. An additional 12% (1,006 persons) of the average daily jail population housed met the same homeless criteria.

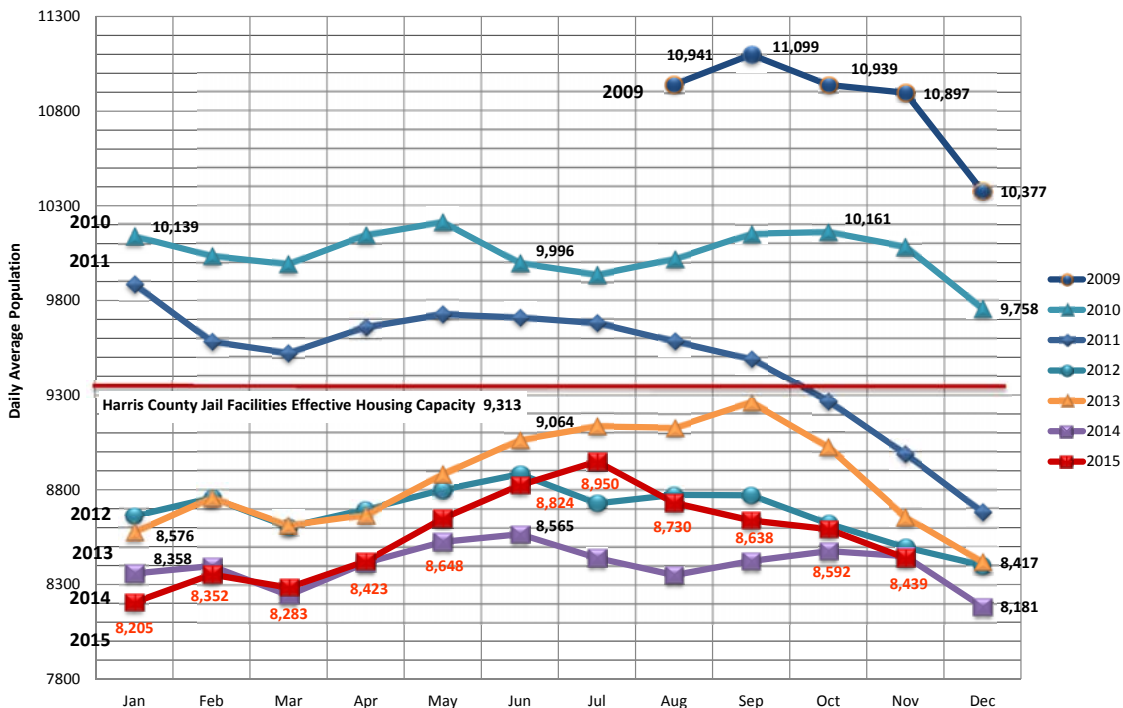
*Note: Fluctuation in the jail population as reported here is influenced by a variety of factors such as the number of cases filed, the number of people who are released on bond, the length of time to complete a case, holds placed on Harris County inmates by other jurisdictions, length of sentences handed down, the effect of early release programs, parole board processing of cases, and the list goes on. The changes observed in the jail population categories from month to month are impacted by any number of these factors and cannot be attributed to a single cause and effect.*

*Note: Effective Housing Capacity is equivalent to 93% of the total number of beds available. At any given time, approximately seven percent of beds are unavailable due to classification issues, repairs, construction, etc. thus preventing 100% utilization of all beds in the facility. The Texas Commission on Jail Standards (TCJS) has approved the use of 580 variance beds in the Harris County Jail. When this additional capacity is added to the design capacity, the total number of beds rises to 10,014, but 7% (701 beds) must be subtracted from this number to determine the effective housing capacity which is 9,313. (The number of variance beds is subject to periodic review by TCJS.)*

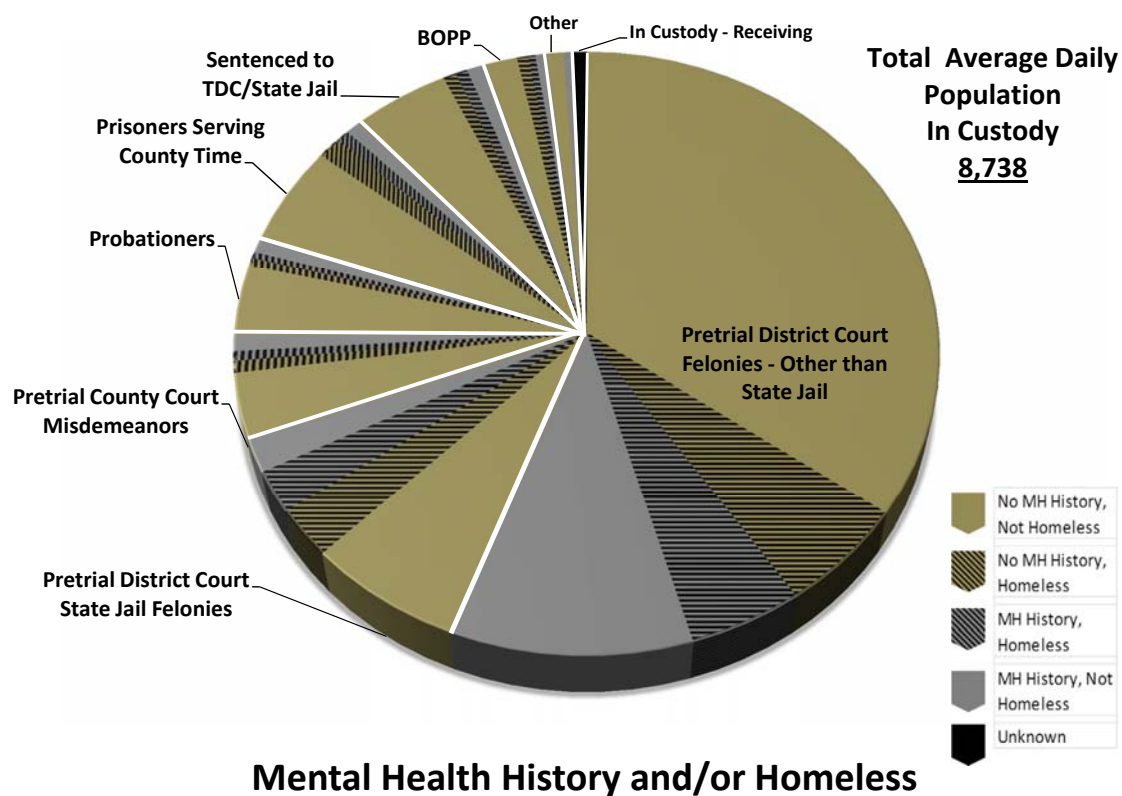
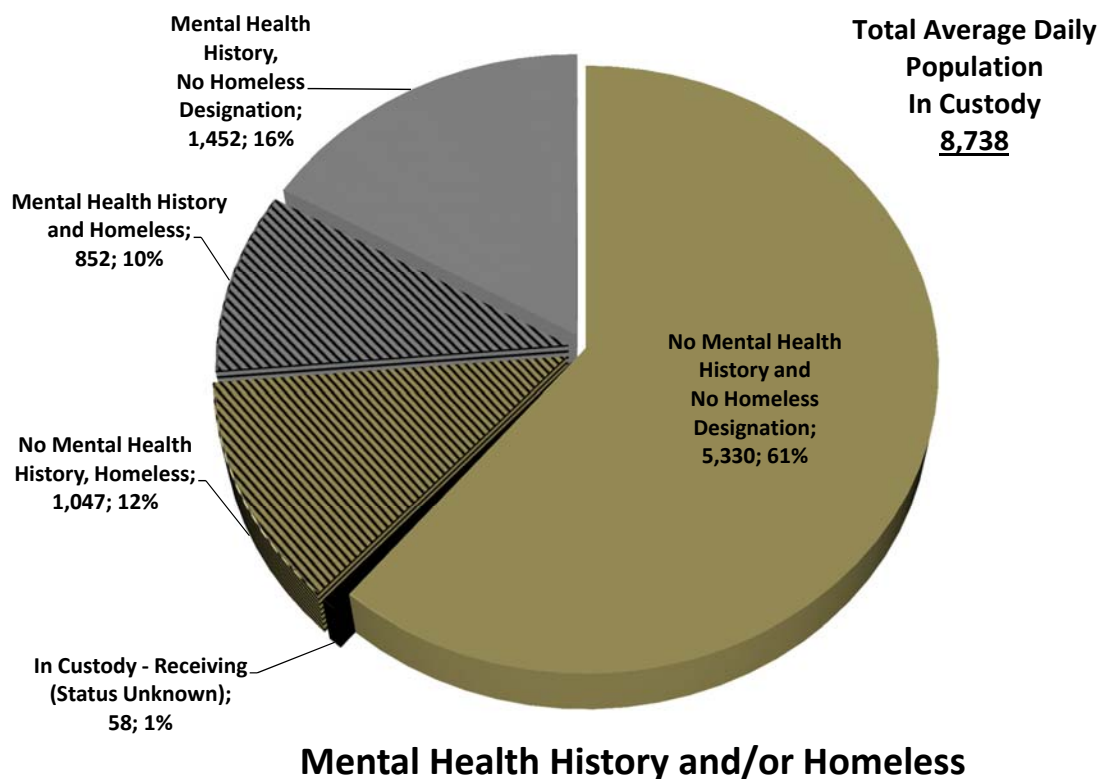
# Harris County - Jail Population November 2015 Report



## HARRIS COUNTY JAIL - Population Housed by HCSO *excludes Inmate Processing Center (IPC)* 2009 - 2015



# Harris County - Jail Population November 2015 Report



# Harris County - Jail Population November 2015 Report

## Comparison of Daily Average Jail Population vs. Facility Capacity

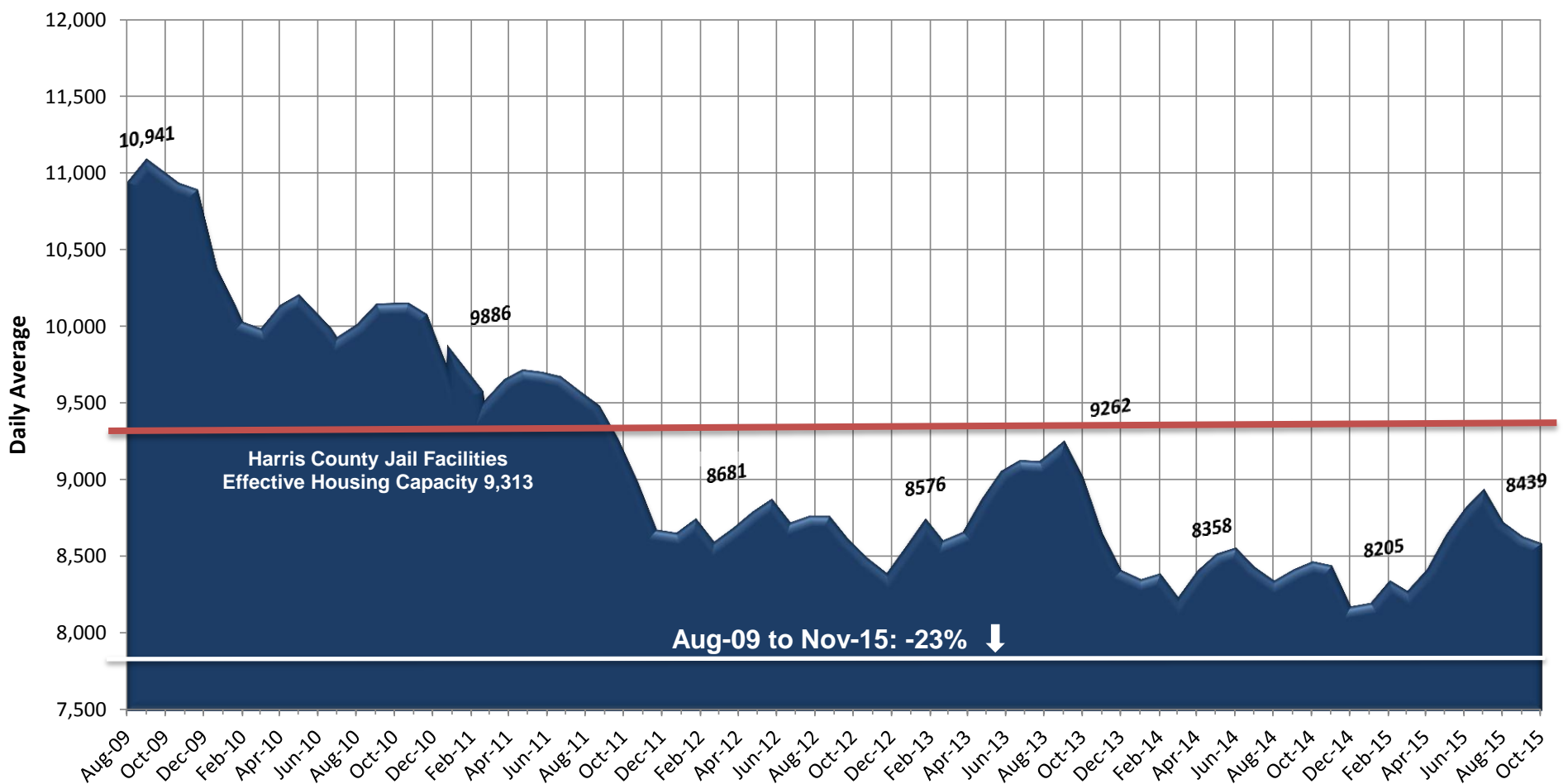
Month/Year	1st mtg of Council Aug-09	1 Year Ago Nov-14	Last Month Oct-15	Current Month Nov-15	Aug-09 - Nov-15	Nov-14 - Nov-15	Oct-15 - Nov-15
Total in HCSO custody	11,295	8,699	8,960	8,738	-23%	0%	-2%
Less IPC <sup>1</sup> daily average	354	250	368	299	-16%	20%	-19%
Total Housed by HCSO	10,941	8,449	8,592	8,439	-23%	0%	-2%
Harris County Jail Facilities Total Design Capacity	9,434	9,434	9,434	9,434			
Total over/(under) design capacity	1,507	(985)	(842)	(995)			
Percent over/(under) design capacity	16%	-10%	-9%	-11%			
					without variance beds		
Harris County Jail Facilities Total Design Capacity	9,434	9,434	9,434	9,434		9,434	
TCJS Approved Variance Beds <sup>3</sup>	1,612	680	580	580		-	
Harris County Jail Total Capacity approved by TCJS	11,046	10,114	10,014	10,014		9,434	
less 7%	(773)	(708)	(701)	(701)		(660)	
<b>Effective Housing Capacity (93%)<sup>2</sup></b>	<b>10,273</b>	<b>9,406</b>	<b>9,313</b>	<b>9,313</b>		<b>8,774</b>	
Total Housed by HCSO	10,941	8,449	8,592	8,439		8,439	
Total over/(under) Effective Housing Capacity	668	(957)	(721)	(874)		(335)	
Percent over/(under) Effective Housing Capacity	7%	-10%	-8%	-9.4%		-3.8%	

<sup>1</sup> IPC Includes those in intake and receiving.

<sup>2</sup> Effective Housing Capacity is equivalent to 93% of the total number of beds available. At any given time, seven percent of beds are unavailable due to classification issues, repairs, construction, etc. thus preventing 100% utilization of all beds in the facility.

<sup>3</sup> As of November 6, 2014 the number of approved variance beds was reduced from 680 to 580 beds.

## Total Inmates Housed



# Harris County - Jail Population November 2015 Report

## Pretrial Detainees

